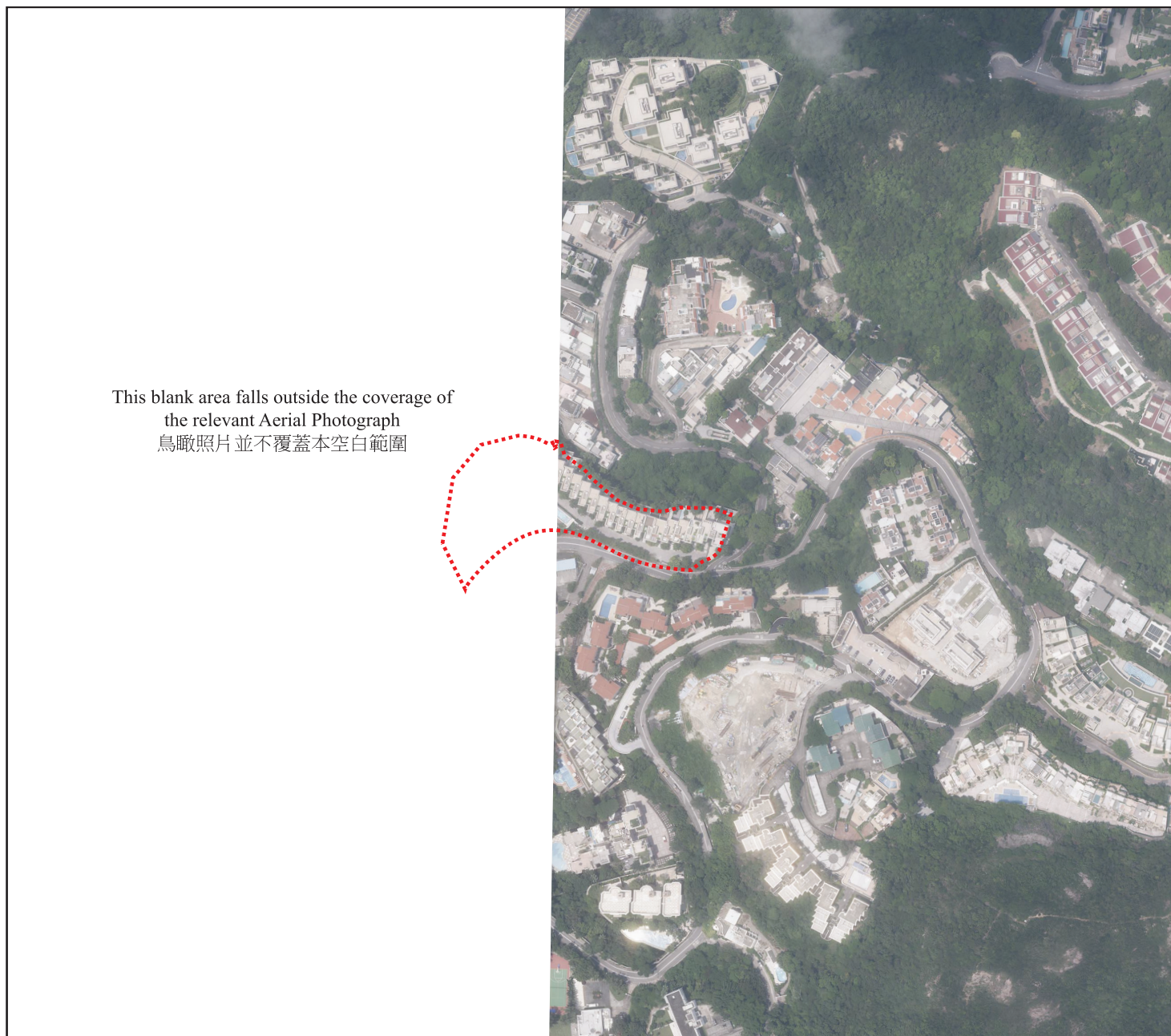



AERIAL PHOTOGRAPH OF THE DEVELOPMENT

發展項目的鳥瞰照片



Survey and Mapping Office, Lands Department, The Government of
HKSAR © Copyright reserved – reproduction by permission only.
香港特別行政區政府地政總署©版權所有，未經許可，不得翻印。

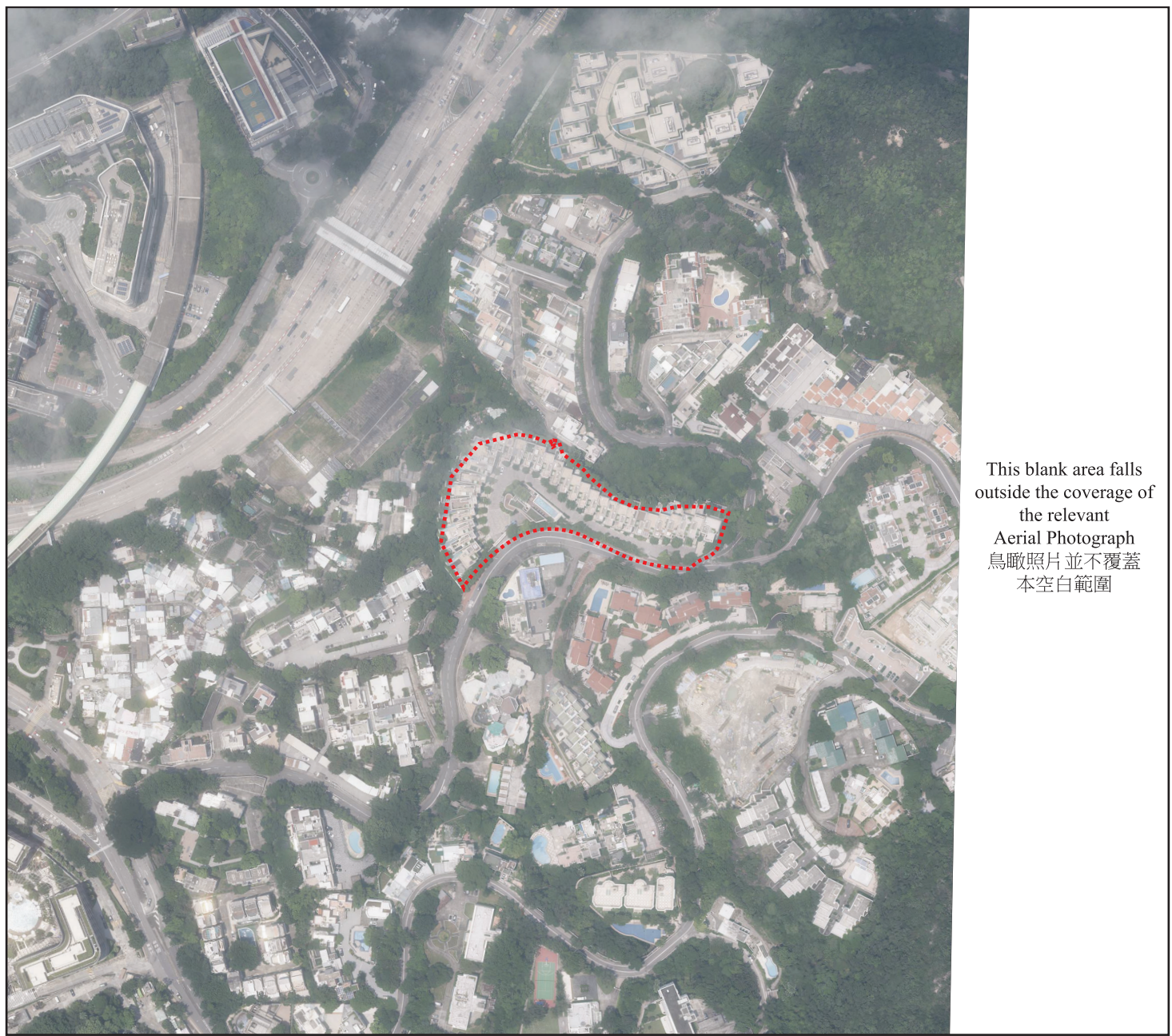
 Location of the Development
發展項目的位置

Adopted from part of the aerial photo taken by the Survey and Mapping Office of the Lands Department at a flying height of 6,000 feet, photo No. E225862C, dated 7th August 2024.
摘錄自地政總署在6,000呎的飛行高度拍攝之鳥瞰照片，照片編號E225862C，飛行日期：2024年8月7日。


- Note :
- Copy of the aerial photograph of the Development is available for free inspection at the sales office during opening hours.
 - The aerial photograph may show more than the area required under the Residential Properties (First-hand Sales) Ordinance due to the technical reason that the boundary of the Development is irregular.
- 備註：
- 發展項目的鳥瞰照片之副本可於售樓處開放時間內免費查閱。
 - 由於發展項目的邊界不規則的技術原因，此照片所顯示的範圍可能超過《一手住宅物業銷售條例》所規定的範圍。

AERIAL PHOTOGRAPH OF THE DEVELOPMENT

發展項目的鳥瞰照片



Survey and Mapping Office, Lands Department, The Government of HKSAR © Copyright reserved – reproduction by permission only.
香港特別行政區政府地政總署©版權所有，未經許可，不得翻印。

 Location of the Development
發展項目的位置

Adopted from part of the aerial photo taken by the Survey and Mapping Office of the Lands Department at a flying height of 6,000 feet, photo No. E225860C, dated 7th August 2024.
摘錄自地政總署在6,000呎的飛行高度拍攝之鳥瞰照片，照片編號E225860C，飛行日期：2024年8月7日。

- Note :
- Copy of the aerial photograph of the Development is available for free inspection at the sales office during opening hours.
 - The aerial photograph may show more than the area required under the Residential Properties (First-hand Sales) Ordinance due to the technical reason that the boundary of the Development is irregular.
- 備註：
- 發展項目的鳥瞰照片之副本可於售樓處開放時間內免費查閱。
 - 由於發展項目的邊界不規則的技術原因，此照片所顯示的範圍可能超過《一手住宅物業銷售條例》所規定的範圍。